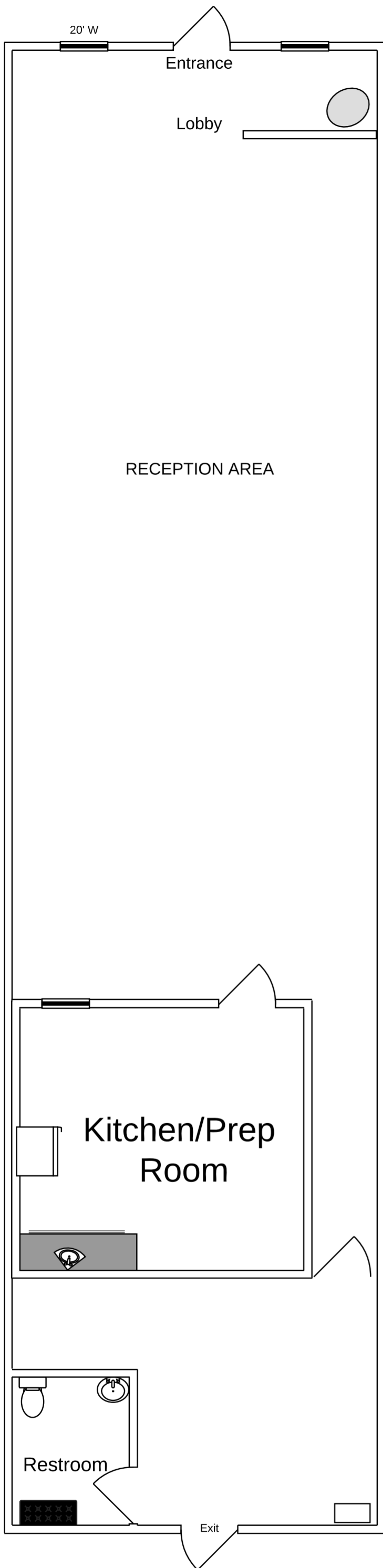


LeVenue Floor Plan

Crystal Johnson | November 18, 2019



Description

Use this basic event floor plan to:

- Draw a bird's-eye view and layout of any property type to scale.
- Visualize your venue.
- Understand the best way to arrange things.

To customize this template:

- Arrange or remove walls and furniture on the canvas to match your layout.
- Use Lucidchart's floor plan shape library to add relevant shapes.

Pro tip: Navigate to "Page Settings" (📄 in the dock to the right) and turn on auto tiling. Your page will automatically adjust in size according to the shapes on the canvas.

Tutorials

(Hold Shift + ⌘ or Ctrl, then click)

[Watch Lucidchart basic tutorials](#)

[See an example](#)

(Hold Shift + ⌘ or Ctrl, then click)